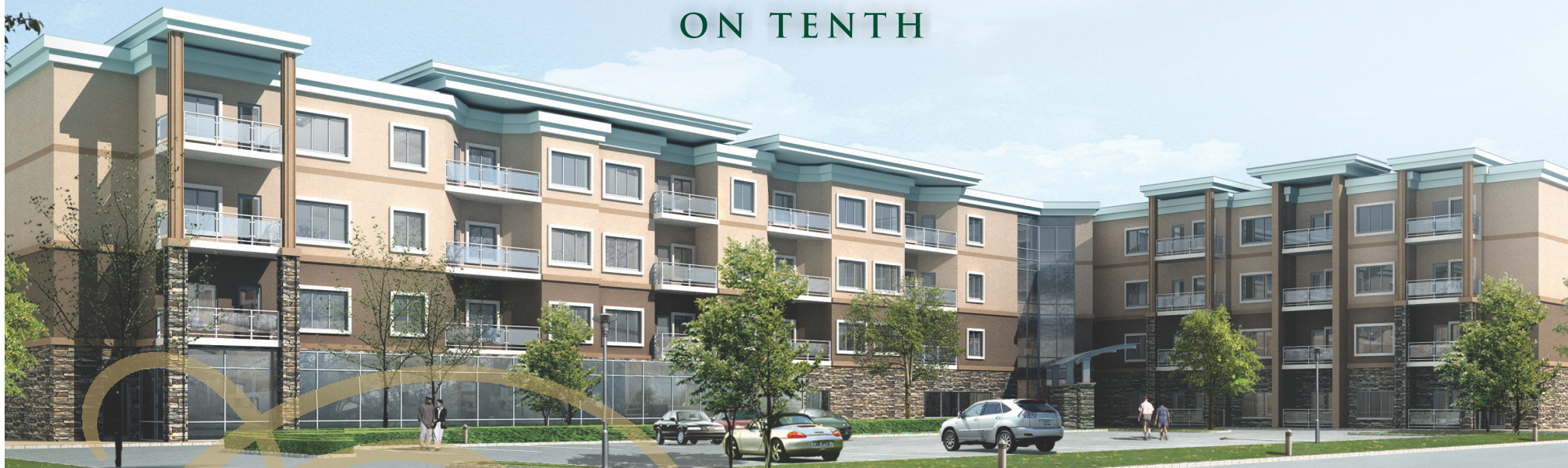


THE GARDENS



ON TENTH



BridgeRoad
DEVELOPMENTS LTD.

INDEX



Building Features	3
Complex Floor Plan - 1st Floor	4
Complex Floor Plan - 2nd to 4th Floor	5
Underground Parking Plan	6
Type A Suite Floor Plan	7
Type B Suite Floor Plan	8
Type C Suite Floor Plan	9
Type D Suite Floor Plan	10



BUILDING FEATURES

LOCATION

A new 66 suite "Independent Living with Services" complex located on Tenth Ave. along the north side of The Gardens on Tenth in beautiful Altona.

SUITES

- Spacious and bright one and two bedroom suites with private balconies
- Kitchens complete with refrigerator/freezer, range and stainless steel sink. Dishwashers in larger suites
- Washer/dryer in all suites
- All suites have large walk-in shower, large suites include tubs
- Individually controlled heat and air conditioning in all suites
- Entire building, including suites are fully wheelchair accessible
- 9' Ceiling
- In-suite Temperature Thermostats
- Optional Suite Features include a selection of decor packages including floor choices.

COMMON AREAS

- Bright elegant dining room with solarium and fireplace
- Spacious main entrance and lobby with sitting area including fireplace and skylight
- Private family dining room
- Combined chapel/multi-purpose room for activities and entertainment
- Central, bright lounges with coffee bars on all floors
- Library/lounge and exercise/games room for tenants
- Solarium Garden cafe

BUILDING

- Beautiful, modern, four story building, plus basement for parking and storage
- Front entrance canopy
- Two quiet elevators with all floor access
- Professional landscaping
- Parking for residents and guests

MONTHLY CHARGES (2012)

- 1 Bedroom suite \$1,243.00 and up (second resident extra)
- 2 Bedroom suite \$1,761.00 and up (second resident extra)
- Monthly charges DO NOT include
 - Telephone
 - TV cable/satellite service
 - Additional resident charge of \$280.00/month for second resident in a suite (dinner only)

ACTIVITIES

- Recreation/activities coordinator
- Planned social/entertainment activities
- Educational and cultural events
- Spiritual care/on site church services

HOUSEKEEPING & MAINTENANCE

- Weekly housekeeping service for each suite available*
- Weekly laundry services available*
- Daily garbage collection for each suite
- Maintenance for suites, building and grounds

HEALTH WELLNESS & SECURITY

- "Home Care" available through usual channels**
- "Victoria Lifeline" available*
- Smoke detectors and sprinkler systems throughout suites and building with central monitoring
- Phone security access into building/unit using existing phone lines
- On site staff for building administration and maintenance

DINING SERVICE

- Dinner prepared on site and served daily in our dining room by our own staff
- Lunch also available as a monthly option*
- Special event, holiday and theme dinners

ADDITIONAL CONVENIENCES

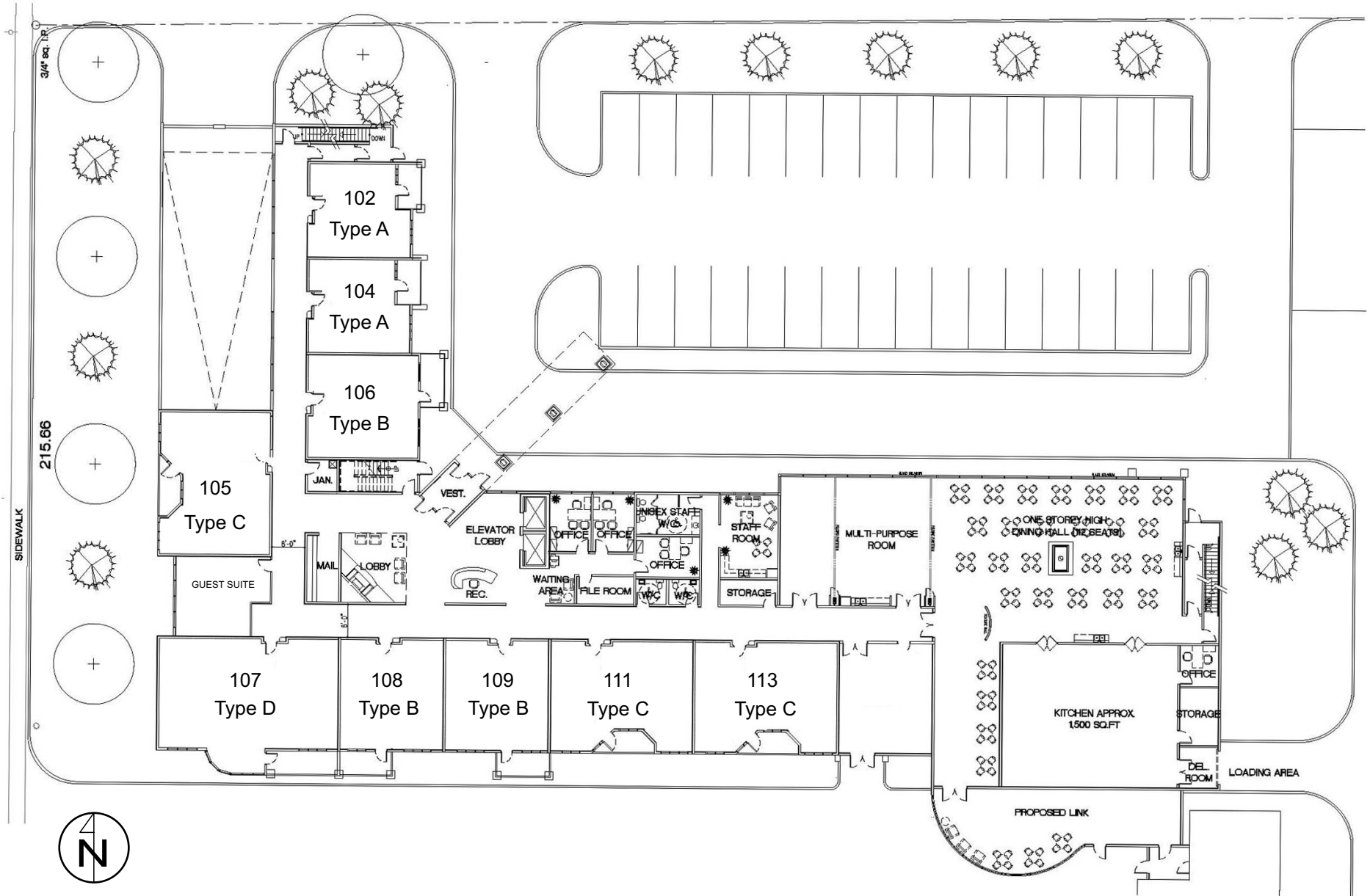
- Secure heated indoor parking available with sprinkler system*
- Outdoor parking with electrical plug available*
- Hair salon*
- Mail service
- Guest suite*
- Wifi

*Services are available on a fee for service basis

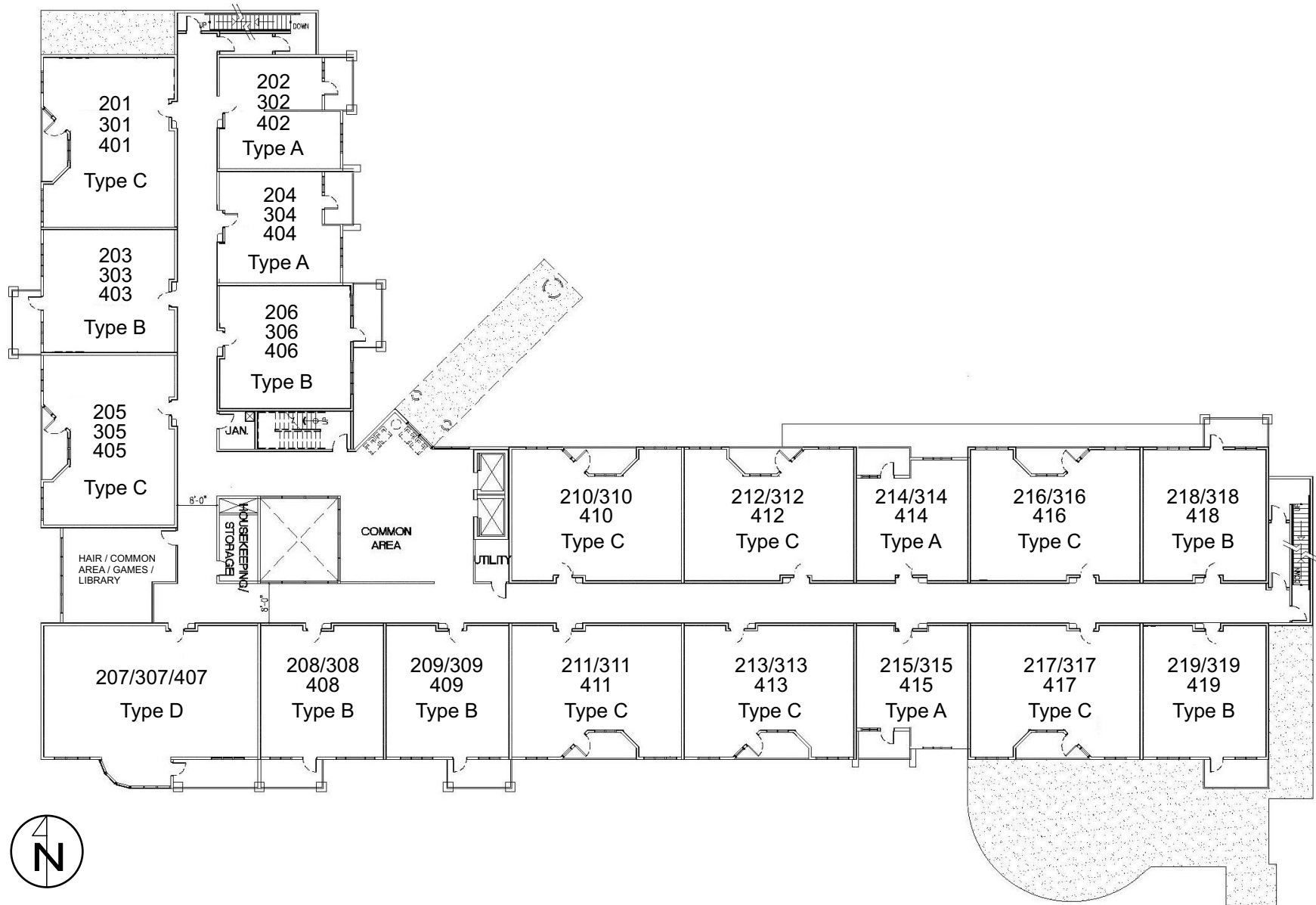
** Administered by Homecare

Subject to changes

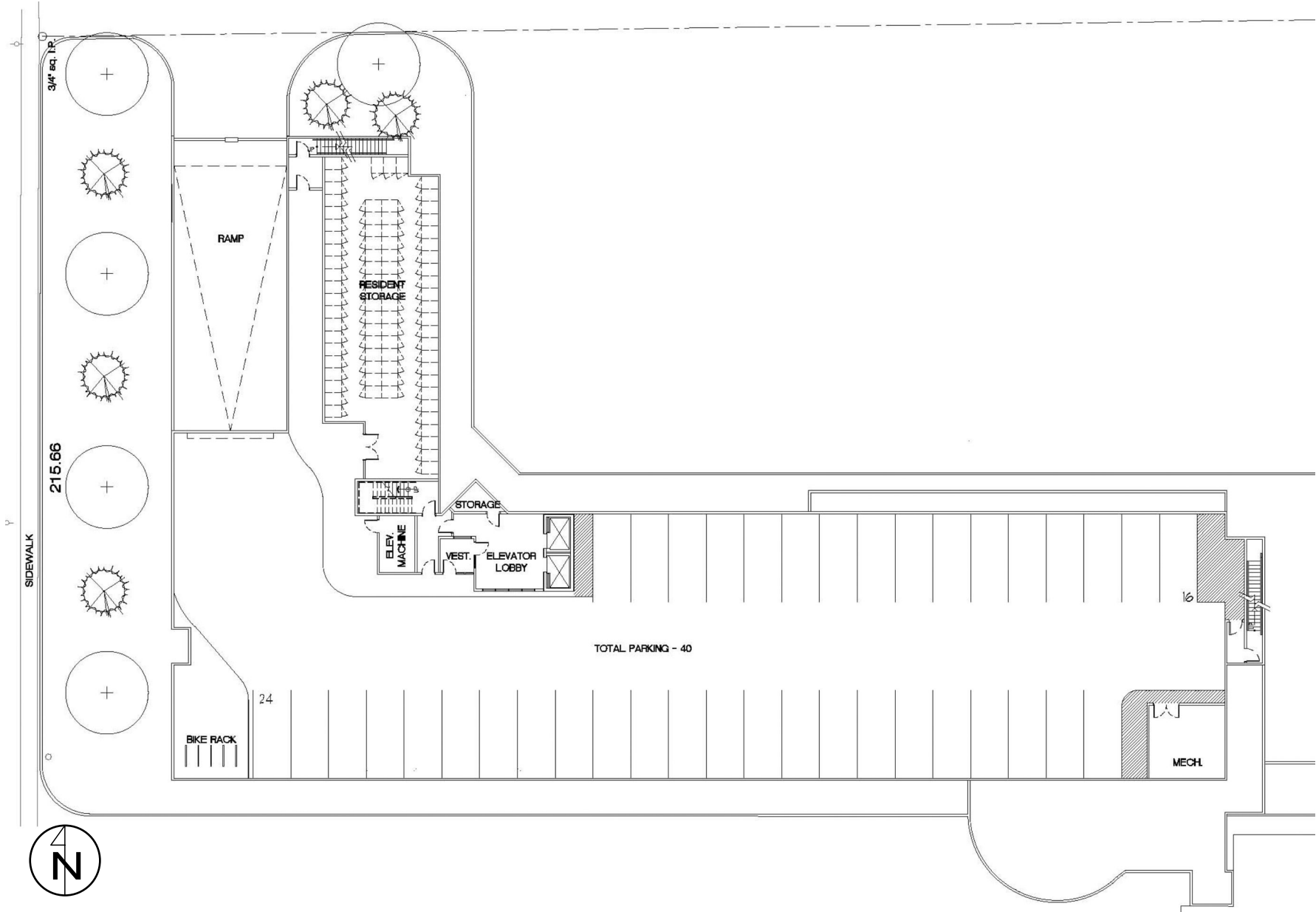
COMPLEX FLOOR PLAN - 1st Floor



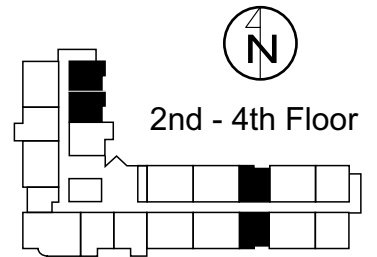
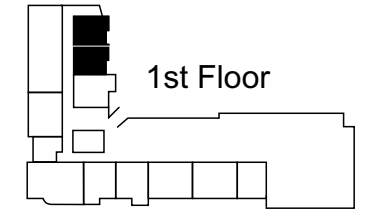
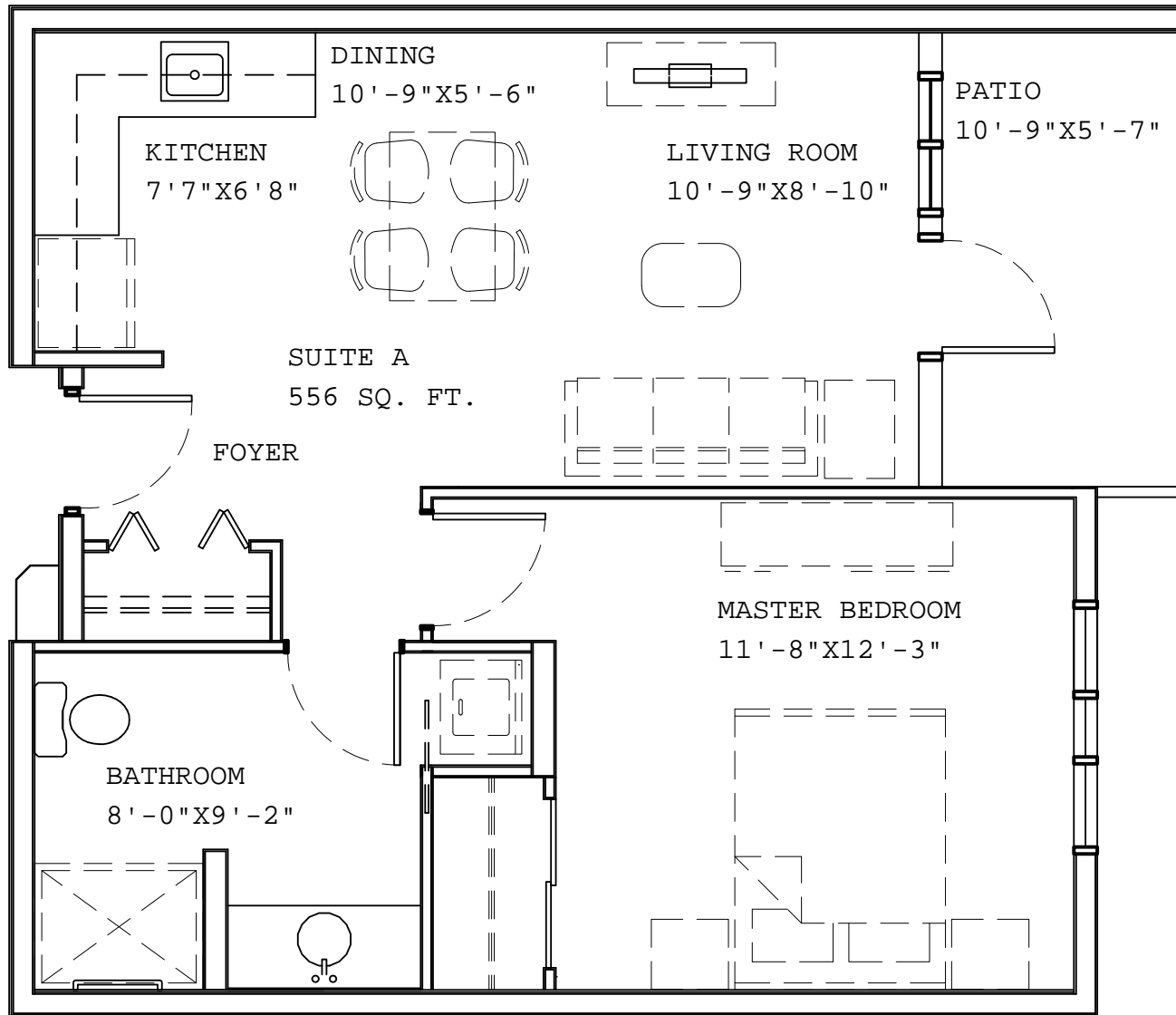
COMPLEX FLOOR PLAN - 2nd to 4th Floor



UNDERGROUND PARKING PLAN

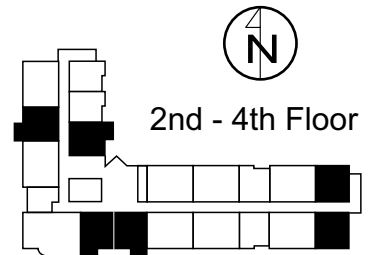
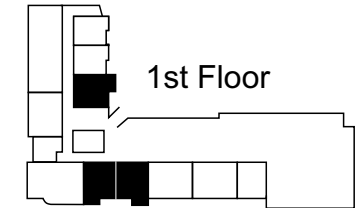
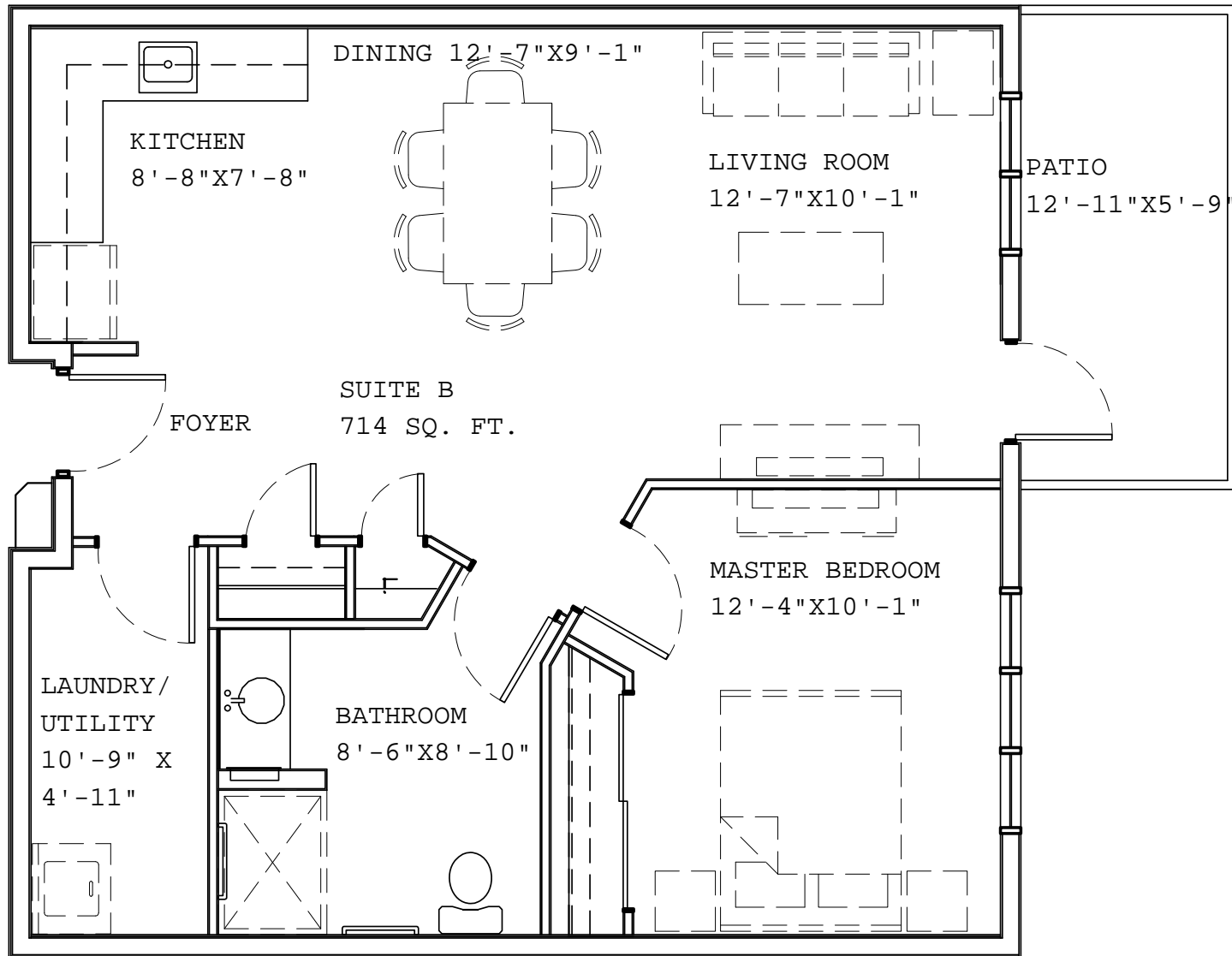


TYPE A



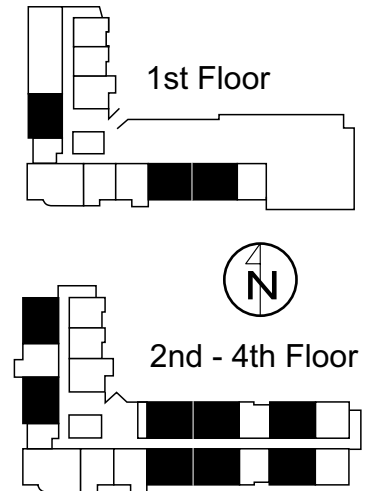
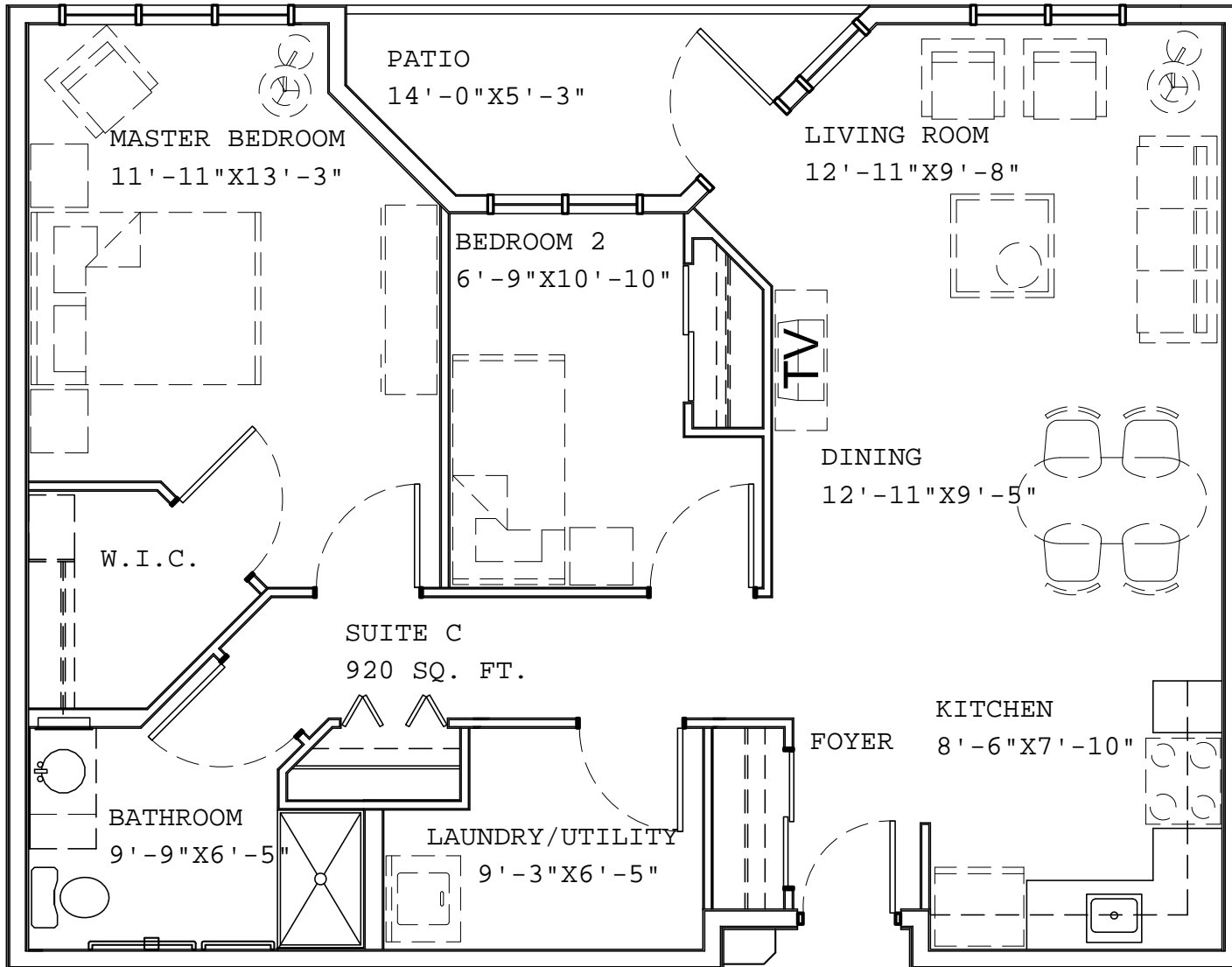
One bedroom
556 SQ FT (excluding balcony)
Total: 14 Type A Suites

TYPE B



One bedroom & Den
714 SQ FT (excluding balcony)
Total: 21 Type B Suites

TYPE C



Two bedroom
920 SQ FT (excluding balcony)
Total: 27 Type C Suites

TYPE D

